



## Allied health assistants

Speech Pathology Australia



Easy English



## Hard words

This book has some hard words.

The first time we write a hard word

- the word is in **blue**
  
- we write what the hard word means.

## You can get help with this book



You can get someone to help you

- read this book
  
- know what this book is about
  
- find more information.



## About this book



This book is written by  
Speech Pathology Australia.



When you see the word **we** it means  
Speech Pathology Australia.



This book is about **allied health assistants**.

Allied health assistants help people who get  
speech pathology to do therapy tasks.

# What is speech pathology?

Speech pathology is a service that helps people



- eat



- drink



- communicate. For example
  - use a communication device



- ask a question
- tell a joke



- make new friends.

## What does an allied health assistant do?



An allied health assistant is a helper who

- can do therapy tasks with clients



- must do what the speech pathologist says.

Allied health assistants are **not** in charge of therapy.



Allied health assistants can help you reach your therapy goals.



You can talk to your speech pathologist to see if an allied health assistant is a good idea for you.

Allied health assistants can help you in lots of ways.



Allied health assistants might help you

- get your message across when you go out.

For example, teach you to order food at a cafe by yourself.



- use your communication device.

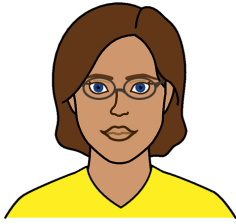
For example, check the device works for you or if it can be better.



- carry out therapy tasks.

For example, practise how to talk each week.

## Who could work with you as an allied health assistant?

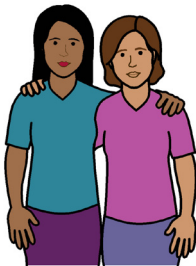


An allied health assistant can be

- a speech pathology student.

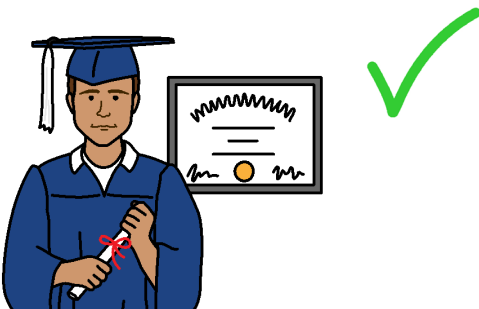


- A person who has worked at a special school. For example, a teacher's aide.



- A trusted family friend.

- A person from an allied health assistant organisation.



- A person with a **certificate**.

Certificate means a person has special training to be an allied health assistant.



## More information



For more information contact  
Speech Pathology Australia.



Website

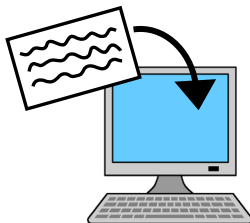
[www.speechpathologyaustralia.org.au/](http://www.speechpathologyaustralia.org.au/)



Call

03 9642 4899

1300 368 885



Email

[office@speechpathologyaustralia.org.au](mailto:office@speechpathologyaustralia.org.au)





© Scope (Aust) Ltd. You may use this document for your own personal, non-commercial purposes only. You must not use the document for any other purpose and must not copy, reproduce, digitise, communicate, adapt or modify the document, or any part of it, (or authorise any other person to do so) without the prior consent of Scope (Aust) Ltd.

Scope's Communication and Inclusion Resource Centre wrote the Easy English version in March, 2020.

To contact Scope call 1300 472 673 or visit [www.scopeaust.org.au](http://www.scopeaust.org.au)

To see the original contact Speech Pathology Australia.

The Picture Communication Symbols ©1981–2020 by Tobii Dynavox.

All Rights Reserved Worldwide. Used with permission.

Boardmaker® is a trademark of Tobii Dynavox.